

BELKA PODSUMNICOWA: BD.310.1

Technical drawing of a window frame assembly, showing a side elevation and a top view.

**Side Elevation:**

- Overall width: 4150
- Overall height: 4700
- Head height: 4250
- Jamb height: 4480
- Sill height: 4700
- Head width: 4300
- Jamb width: 4470
- Sill width: 4650
- Head depth: 150
- Jamb depth: 150
- Sill depth: 150
- Head width (left): 150
- Jamb width (left): 150
- Sill width (left): 150
- Head width (right): 150
- Jamb width (right): 150
- Sill width (right): 150
- Head depth (left): 150
- Jamb depth (left): 150
- Sill depth (left): 150
- Head depth (right): 150
- Jamb depth (right): 150
- Sill depth (right): 150
- Head width (center): 150
- Jamb width (center): 150
- Sill width (center): 150
- Head depth (center): 150
- Jamb depth (center): 150
- Sill depth (center): 150
- Head width (right): 150
- Jamb width (right): 150
- Sill width (right): 150
- Head depth (right): 150
- Jamb depth (right): 150
- Sill depth (right): 150
- Head width (left): 150
- Jamb width (left): 150
- Sill width (left): 150
- Head depth (left): 150
- Jamb depth (left): 150
- Sill depth (left): 150

**Top View:**

- Overall width: 300
- Overall depth: 380
- Head depth: 135
- Jamb depth: 95
- Sill depth: 150
- Head width: 150
- Jamb width: 150
- Sill width: 150
- Head depth (left): 150
- Jamb depth (left): 150
- Sill depth (left): 150
- Head depth (right): 150
- Jamb depth (right): 150
- Sill depth (right): 150
- Head width (left): 150
- Jamb width (left): 150
- Sill width (left): 150
- Head width (right): 150
- Jamb width (right): 150
- Sill width (right): 150

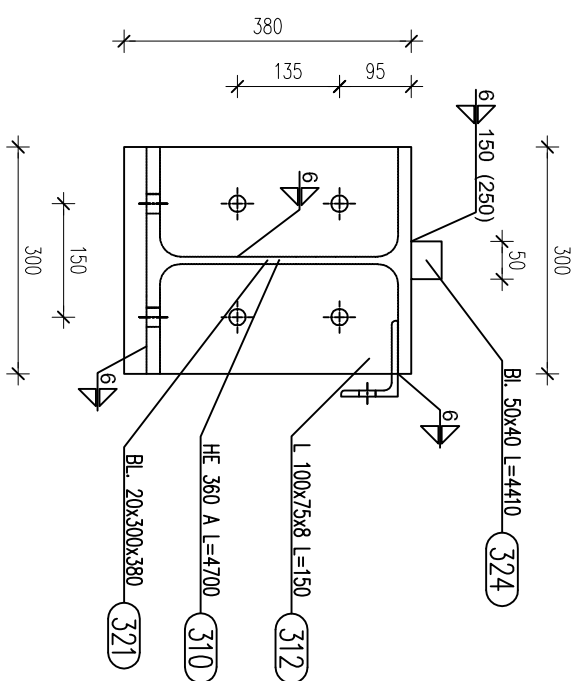
**Components and Dimensions:**

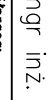
- 312 L 100x75x8 L=150
- 318 BL 10x100x110
- 310 HE 360 A L=4700
- 321 BL 20x300x380
- 324 BL 50x40 L=4410
- 314 L 100x75x8 L=170
- 315 L 100x75x8 L=170
- 320 BL 10x115x204
- 316 HE 240 A L=475
- 322 BL 10x140x314
- 312 L 100x75x8 L=150
- 318 BL 10x100x110
- 319 BL 10x140x150
- 324 BL 50x40 L=4410
- 314 L 100x75x8 L=170
- 315 L 100x75x8 L=170
- 320 BL 10x115x204
- 316 HE 240 A L=475
- 322 BL 10x140x314

BD.310.1 Widok z przodu (Sc1:10)  
BELKA PODSUWNICOWA (2 x)

The drawing shows a horizontal beam with the following dimensions and markers:

- Top dimension: 4300
- Section marker 1: 200 (above the line)
- Section marker 2: 0 (above the line)
- Section marker 3: 4210 (above the line)
- Section marker 4: 490 (above the line)
- Section marker 5: 4210 (below the line)
- Section marker 6: 4700 (below the line)





**"ATM" Krzysztof Miklaszewicz – usługi budowlane**  
 ul. Skłodowska 12 lok. 107, 15-359 Białystok  
 tel. 85 742 40 08 wew.20, atmprojekt@interia.pl

**projekt:**  
**ZESPÓŁ BUDYNKÓW DO PRZEPROWADZANIA**  
**KONTROLI FITOSANITARNEJ**  
**DZIAŁKA NR GEOD. 271/6 W KUŹNICY**

<b>nr rys.</b>	<b>Ks-65</b>	<b>rysunek:</b>	<b>BELKA PODSIUMNICOWA: BD.310.1</b>
<b>opracował:</b>	<b>mgr inż. M. Maliszewski</b>	<b>nr uprawnień:</b>	<b>PdL/0008/PWKB/17</b>
<b>sprawdził:</b>	<b>mgr inż. H. Maliszewski</b>	<b>nr uprawnień:</b>	<b>BR 16/81</b>
<b>współpraca:</b>		<b>nr uprawnień:</b>	
		<b>składa:</b>	<b>1:10</b>
<b>branża:</b> <b>KONSTRUKCJA</b>			<b>data:</b> <b>12.08.2021</b>